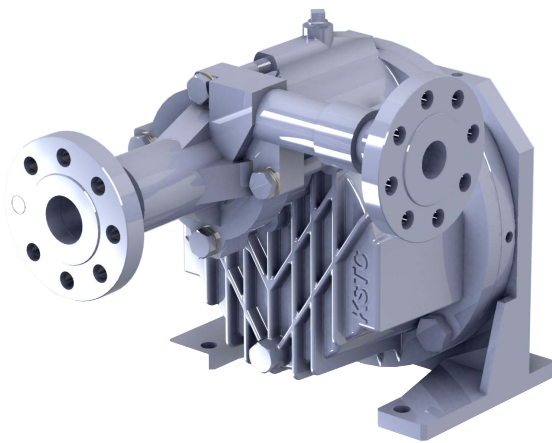
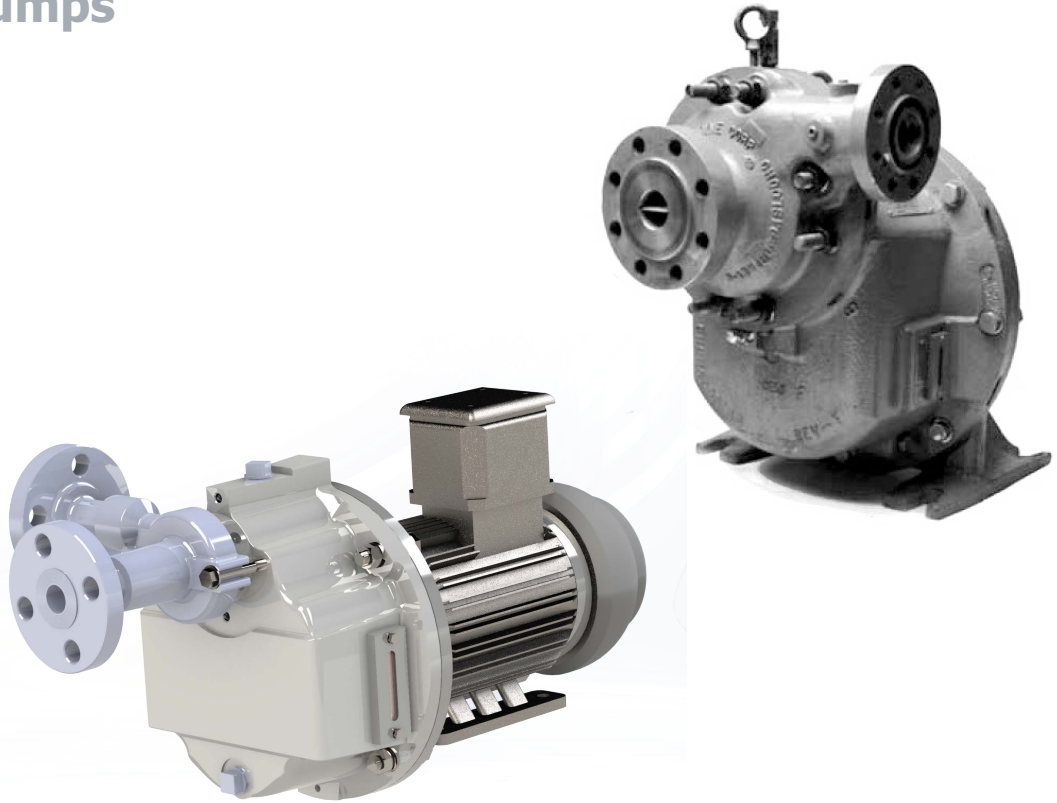


KSTC

Kavosh Sanat Toos Co.

KSTC *SUNFLO*
High-Pressure
Centrifugal Pumps



Industrial Strength Solutions Made Easy™

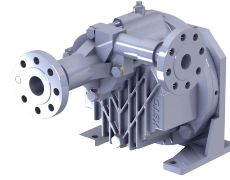
KSTC Corporation designs, manufactures and supports industrial pump and compressor products for the process fluid and gas industries. With manufacturing facilities to solve the challenges facing its global customers. The company's products include high-speed centrifugal pumps, compressors, sealless pumps, sanitary pumps and other process engineered .packaging

We are here to stay --
to keep you up
and running!

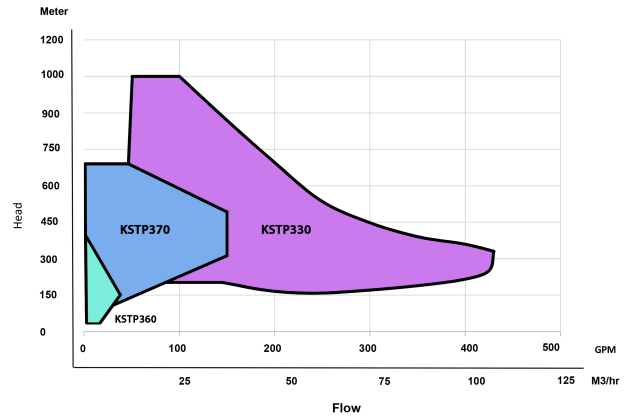
Reliable, High Pressure Performance

Why KSTC Sunflo

KSTP-370

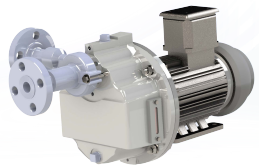


NEW!



► Access **PRODUCT LAUNCH** at:
www.KSTC.ir

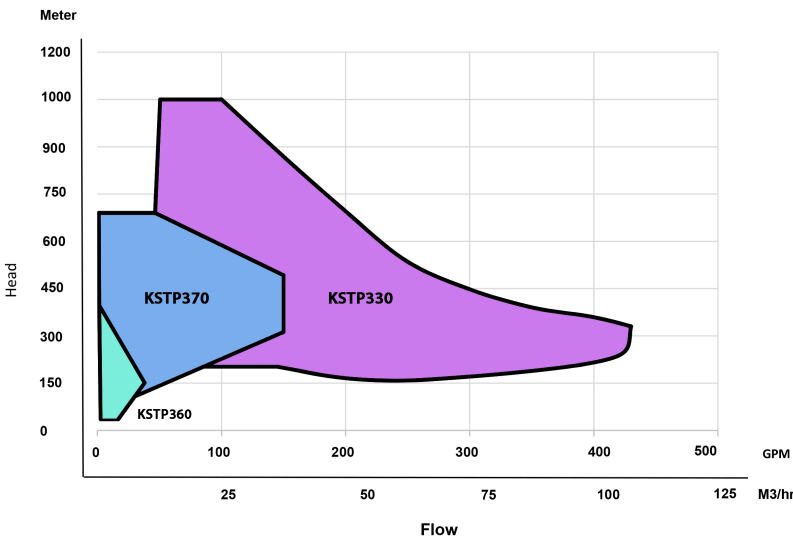
KSTP-360



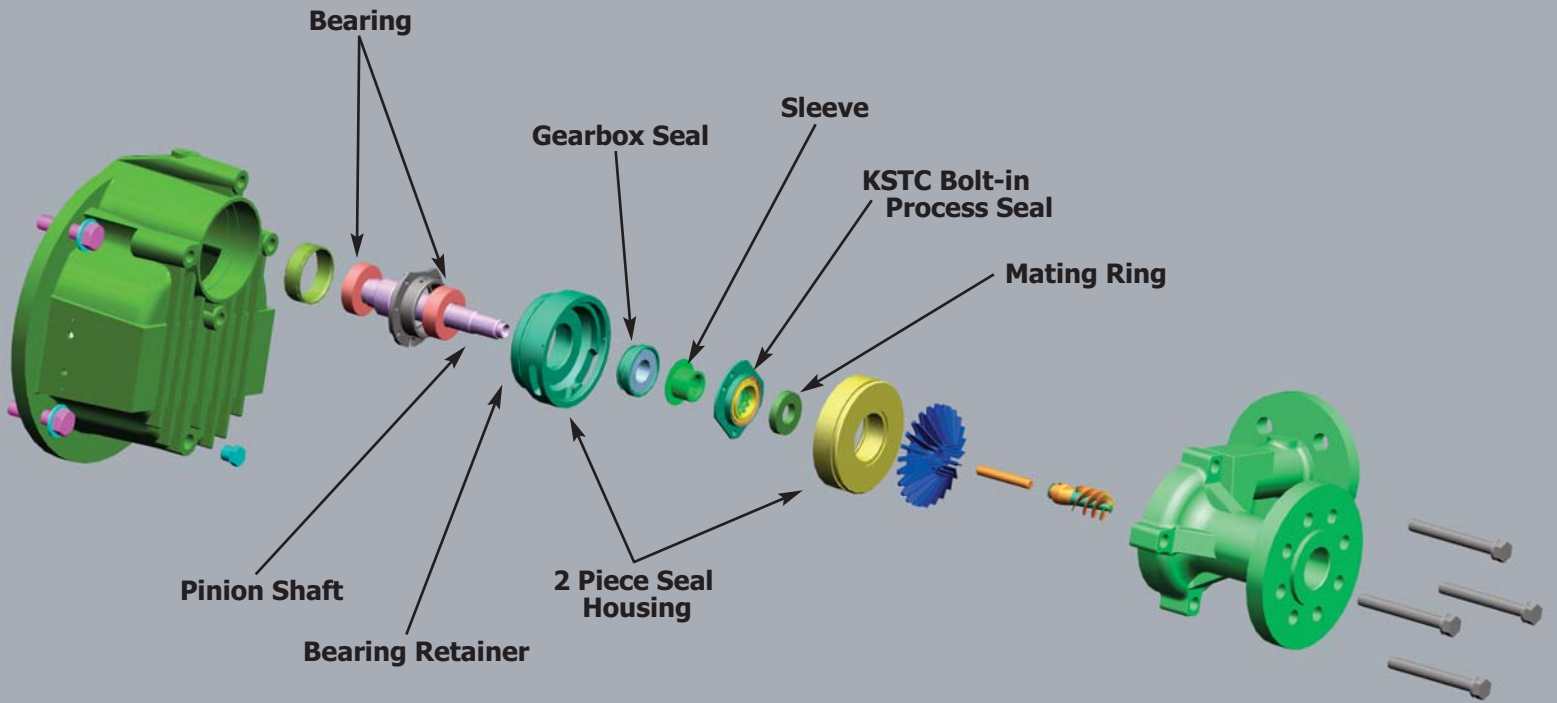
More Features Than Ever Before

KSTC innovative engineering has developed a robust design to meet your rigorous application requirements. The results :are field-proven and include

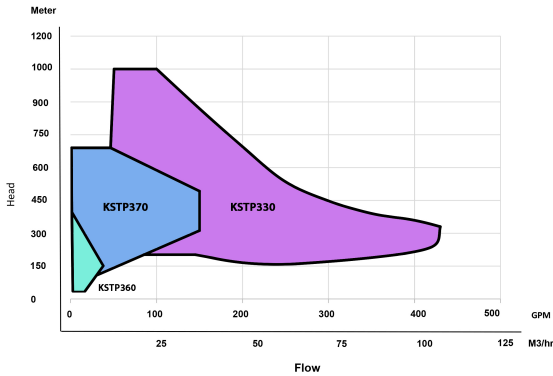
- Unprecedented reliability
- 25,000 hr MTBR
- Ease of maintenance
- Interchangeable shaft assembly
- Prevention of lubrication contamination resulting in longer bearing life
- Multiple seal plans
- ...and more



*KSTC's Application Success Defines Our Vision: ...we ARE
the world class leader in powering the
.production of life's basic needs*



Pocket Folder



KSTP-330



Standard Materials of Construction (All Models)

Pump Casing	316 S.S.
Seal Housing	316 S.S.
Seal Parts	316 S.S.
Impeller/Inducer	316 S.S.
Shaft Sleeve	316 S.S.
Diffuser Plate	316 S.S.
Shaft	AISI 4140/8620/9310
Drive and Pinon Gear	AISI 4140/8620/9310
Gearbox Housing/Mounting Frame	Aluminum or Cast Steel

**Special alloys available upon request.*

- ▶ **Pollution Control**
- ▶ **Chemical and Petroleum**
- ▶ **Power Systems**

- ▶ **General Industrial**
- ▶ **Pulp and Paper**
- ▶ **Vehicle Manufacturing**

- ▶ **Mining**
- ▶ **Food and Beverage**
- ▶ **Oil production**



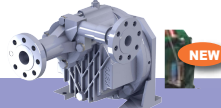
Retrofit Your Sunflo HSSA TODAY!

Convert your P-2000 to a P-2500 and take advantage of the many feature enhancements now available -- at a fraction of the cost of a new pump. Realize significant gains in performance, reliability and longer life.

KSTC Sunflo offers a factory exchange program for its high-speed shaft assembly replacements. This convenient program allows you to send in your old shaft assembly and receive a return credit, providing significant cost savings. Best of all, rebuilt units have the same quality construction, testing and .factory warranty as new shaft assemblies

The shaft assembly comes complete with all the rotating parts, seals and bearings making an in-place overhaul fast and trouble-free. KSTC remains committed to making it easier for you to do business with us. Visit www.KSTC.ir for more detail.

The KSTC Sunflo series of pumps represents a legacy of innovative engineering excellence. Compare the complete Sunflo family series below for the configuration that best meets your needs:



Model	KSTP-360	KSTP-370	KSTP-330
Flow To	33 gpm (7.5 m ³ /hr)	180 (41 m ³ /hr)	500 gpm (114 m ³ /hr)
Heads To	1300 ft (396 m)	2,600 (792 m)	4200 ft (1280 m)
Max Power	10 hp (7 kw)	75 hp (55 kw)	250 hp (186 kw)
Temp Range	-50 to 300°F (-46 to 149°C)	-50 to 300°F (-46 to 149°C)	-50 to 350°F (-46 to 177°C)
Number of Stages	1	1	1
Max Case Working Pressure	1,000 psi (70 kg/cm ²)	1,440 psi (105 kg/cm ²)	2,160 psi (152 kg/cm ²)
Max Suction Pressure	125/200 psi (9/14 kg/cm ²)	250 psi (18 kg/cm ²)	350 psi (25 kg/cm ²)
Speed Range	13,000 - 32,000 rpm	5,987 - 14,707 rpm	6,756 - 17,750 rpm
Bearing Materials Available	Rolling Element, Oil Lubricated, Grease Packed	Rolling Element, Oil Lubricated, Grease Packed	Rolling Element, Journal Bearings Oil Lubricated, Grease Packed
Hydro Test Pressure	1,080 psig (76 kg/cm ²)	2,160 psig (152 kg/cm ²)	2,160 psig (152 kg/cm ²)
Max Viscosity	Consult Factory	Consult Factory	Consult Factory

Typical Applications Boiler Feed, Reverse Osmosis, NOx Suppression, Washdown, Injection, Seal Flush, Condensate Return, Gun Drilling, Felt Shower, Trim Squirt, Plane De-icing, Mining Dust Suppression

Industries	Chemicals & Petroleum Refining, Power Generation, Pulp & Paper, Food & Beverage, Water Treatment, General Industry, Mining, Automotive	Chemicals & Petroleum Refining, Power Generation, Pulp & Paper, Food & Beverage, Water Treatment, General Industry, Mining, Automotive	Chemicals & Petroleum Refining, Power Generation, Pulp & Paper, Food & Beverage, Water Treatment, General Industry, Mining, Automotive
Solids Range	up to 1000 microns	up to 1000 microns	up to 1000 microns
Mounting Configurations	Horizontal Right and Left, Vertical Up and Down (viewed from suction)	Horizontal Right and Left, Vertical Up and Down (viewed from suction)	Horizontal Right, Vertical Up (viewed from suction)
# Available Hydraulics	36	147	244
Seal Configurations Available	Single, Double	Single, Double	Single, Double
Available Inducer	Yes	Yes	Yes
Seal Plans for Sunflo Pumps	11, 13, 21, 31, 41, 52, 53	11, 13, 14, 21, 23, 31, 32, 41, 52, 53, 54, 62	11, 13, 21, 31, 41, 52, 53
Available Flanges	300# RF	300# RF, 600# RF	900# RF, P-3 Discharge
Pump Case Corrosion Allowance	Generous Clearances, No Performance Degradation	Generous Clearance, No Performance Degradation	1/8" (3.2 mm)
Suction and Discharge Size	1" X 1"	2" X 1.5"	4" X 3", 3" X 2"

SUNFLO Ease of Maintenance

The KSTC "one person, one wrench, one hour" philosophy continues to be the cornerstone of the Sunflo family.

Elapsed Time: (0:30 min)





HEAVY DUTY API PUMPS

HIGH PRESSURE PUMPS

SEALLESS PUMPS

SANITARY PUMPS

COMPRESSORS

SERVICE

Dealer Label:

KSTC Corporation
Central Site
Khorasan Science &
Technology Park, 12km
og Asian Exp, Mashhad,
Iran

Tell: +985135421701-05
Fax: +985135421706
www.kstc.ir
info@kstc.ir
sales@kstc.ir