

KSTC

Kavosh Sanat Toos Co.

SPECIAL ROTARY EQUIPMENT OF
OIL, GAS, PETROCHEMICAL & POWER INDUSTRIES

Industrial Pumps Catalog



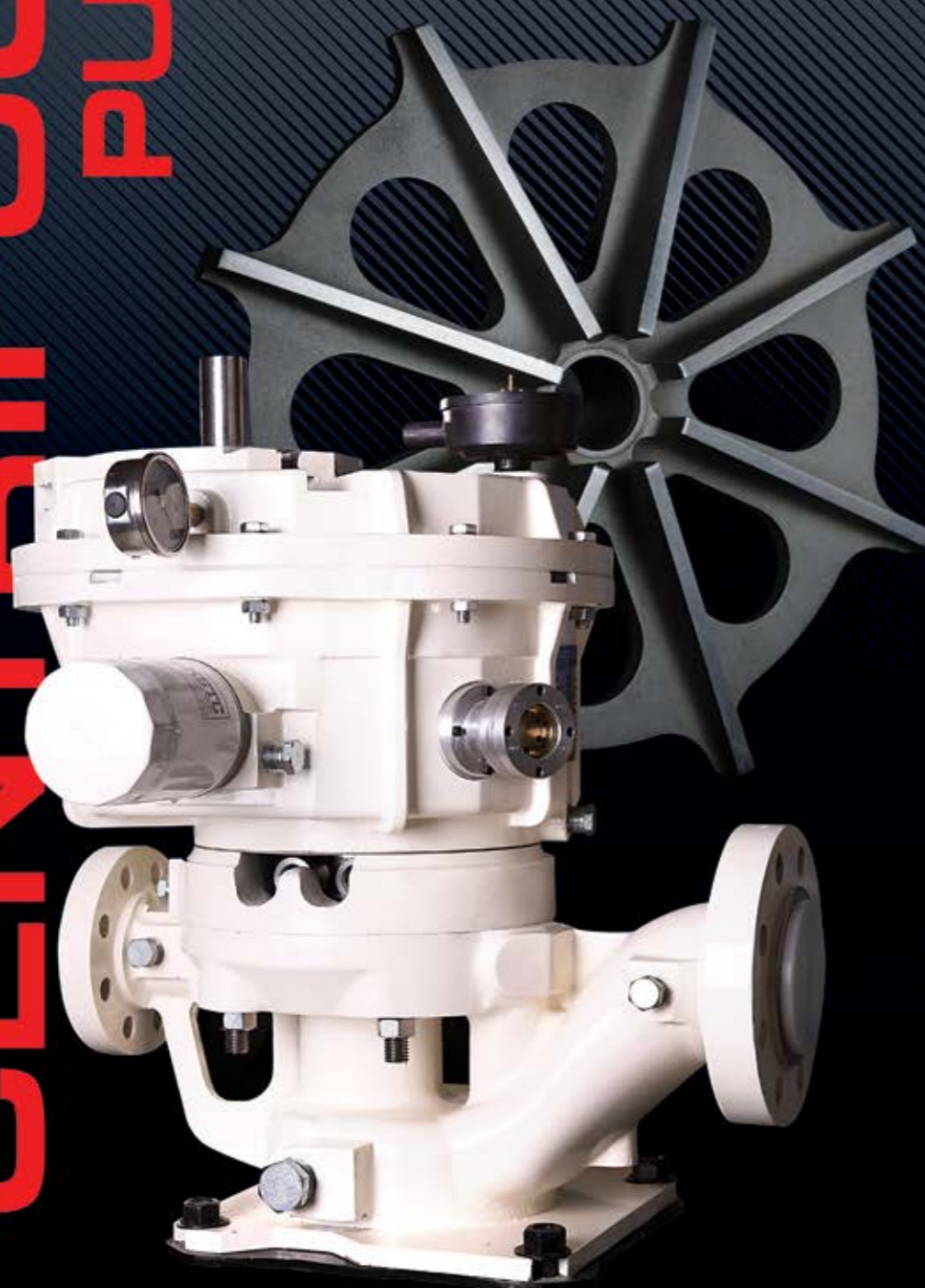
High-Speed Integrally Geared CENTRIFUGAL PUMPS

VERTICAL

(API 610 10TH EDITION, OH6) SINGLE STAGE

HORIZONTAL

SINGLE & MULTI STAGES



VERTICAL

HIGH-SPEED INTEGRALLY
GEARED CENTRIFUGAL PUMPS
(API 610 10TH EDITION, OH6)



High-speed integral gear-driven single-stage overhung pumps shall be designated pump type OH6. These pumps have a speed increasing gearbox integrated with the pump. The impeller is mounted directly to the gearbox output shaft. There is no coupling between the gearbox and pump; however, the gearbox is flexibly coupled to its driver. The pumps may be oriented vertically or horizontally. This type of pumps are ideal for critical heavy-duty process applications

VERTICAL

HIGH-SPEED INTEGRALLY GEARED CENTRIFUGAL PUMPS

KSTP140

Type	High-Speed Integrally Geared Single-Stage Centrifugal Pump
Head	up to 1,920 m (up to 6,300 ft)
Flow Rate	up to 400 m ³ /hr (up to 90 gpm)
Max. Power Required	150 kW (200 hp)
Max. Suction Pressure	70 bar (1,000 psi)
Speed Range	6,000 to 20,000 rpm
Mounting Configuration	Vertical
Suction and Discharge Flanges	3"x2", 600#, or 900# Optional (ANSI RF or RTJ)

KSTP151

Type	High-Speed Integrally Geared Single-Stage Centrifugal Pump
Head	30 to 915 m (100 to 3,000 ft)
Flow Rate	0 to 230 gpm us (0 to 60 m ³ /hr)
Max. Power Required	37 kW (50 hp)
Max. Suction Pressure	32 bar (450 psi)
Speed Range	6,000 to 20,000 rpm
Mounting Configuration	Vertical
Suction and Discharge Flanges	3"x2", 600# or other ratings (ANSI RF)

KSTP162

Type	High-Speed Integrally Geared Single-Stage Centrifugal Pump
Head	300 to 825 m (1,000 to 4,200 ft)
Flow Rate	100 to 220 m ³ /hr (450 to 900 gpm)
Max. Power Required	186 kW (250 hp)
Max. Suction Pressure	36 bar (500 psi)
Speed Range	9,300 to 14,400 rpm
Mounting Configuration	Vertical
Suction and Discharge Flanges	6"x4", 600# (ANSI RF)



VERTICAL



KSTP172

Type	High-Speed Integrally Geared Single-Stage Centrifugal Pump
Head	150 to 800 m (500 to 2,700 ft)
Flow Rate	220 to 280 m ³ /hr (900 to 1,300 gpm)
Max. Power Required	300 kW (400 hp)
Max. Suction Pressure	36 bar (500 psi)
Speed Range	7,700 to 16,200 rpm
Mounting Configuration	Vertical
Suction and Discharge Flanges	6"x4", 600# (ANSI RF)

KSTP142

Type	High-Speed Integrally Geared Single-Stage Centrifugal Pump
Head	30 to 550 m (100 to 1,790 ft)
Flow Rate	50 to 200 m ³ /hr (200 to 900 gpm)
Max. Power Required	150 kW (200 hp)
Max. Suction Pressure	36 bar (500 psi)
Speed Range	5,600 to 12,000 rpm
Mounting Configuration	Vertical
Suction and Discharge Flanges	6"x4", 600# (ANSI RF)

KSTP175

Type	High-Speed Integrally Geared Single-Stage Centrifugal Pump
Head	800 to 1,920 m (2,600 to 6,300 ft)
Flow Rate	20 to 90 m ³ /hr (100 to 400 gpm)
Max. Power Required	300 kW (400 hp)
Max. Suction Pressure	127 bar (1800 psi)
Speed Range	10,000 to 24,000 rpm
Mounting Configuration	Vertical
Suction and Discharge Flanges	3"x2", 600#, 900#, 1500# (ANSI RF or RTJ)

KSTP180

Type	Single-Stage Close Coupled Centrifugal Pump
Head	3 to 219 m (10 to 720 ft)
Flow Rate	8 to 85 m ³ /hr (10 to 380 gpm)
Max. Power Required	55 kW (75 to 100 hp)
Max. Suction Pressure	70 bar (1,000 psi)
Speed Range	1,450 to 3,550 rpm
Mounting Configuration	Vertical, Horizontal
Suction and Discharge Flanges	3"x2", 600#, or 900# Optional (ANSI RF)



VERTICAL

KSTP181

Type	Single-Stage Close Coupled Centrifugal Pump
Head	6 to 65 m (20 to 210 ft)
Flow Rate	8 to 33 m ³ /hr (10 to 150 gpm)
Max. Power Required	37 kW (50 hp)
Max. Suction Pressure	42 bar (600 psi)
Speed Range	1,450 to 3,550 rpm
Mounting Configuration	Vertical
Suction and Discharge Flanges	3"x2", 600# or other ratings (ANSI RF)

KSTP 160/260

Type	High-Speed Integrally Geared Single-Stage Centrifugal Pump
Head	750 to 1,150 m (2,500 to 3,800 ft)
Flow Rate	60 to 90 m ³ /hr (270 to 390 gpm)
Max. Power Required	250 kW (350 hp)
Max. Suction Pressure	70 bar (1,000 psi)
Speed Range	10,000 to 20,000 rpm
Mounting Configuration	Vertical, Horizontal
Suction and Discharge Flanges	3"x2", 600#, or 900# Optional (ANSI RF)

KSTP 170/270

Type	High-Speed Integrally Geared Single-Stage Centrifugal Pump
Head	800 to 1,920 m (2,600 to 6,300 ft)
Flow Rate	20 to 90 m ³ /hr (100 to 400 gpm)
Max. Power Required	300 kW (400 hp)
Max. Suction Pressure	70 bar (1,000 psi)
Speed Range	10,000 to 24,000 rpm
Mounting Configuration	Vertical, Horizontal
Suction and Discharge Flanges	3"x2", 600#, or 900# Optional (ANSI RF or RTJ)

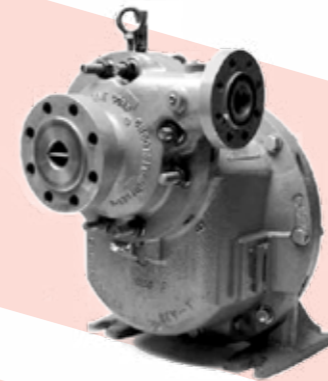
KSTP185

Type	Single-Stage Close Coupled Centrifugal Pump
Head	3 to 325 m (10 to 760 ft)
Flow Rate	8 to 85 m ³ /hr (10 to 380 gpm)
Max. Power Required	55 kW (75 hp)
Max. Suction Pressure	40 bar (557 psi)
Speed Range	1,450 to 3,550 rpm
Mounting Configuration	Vertical, Horizontal
Suction and Discharge Flanges	3"x2", 600# or other ratings (ANSI RF)



HORIZONTAL

HIGH-SPEED INTEGRALLY GEARED CENTRIFUGAL PUMPS | SINGLE STAGE



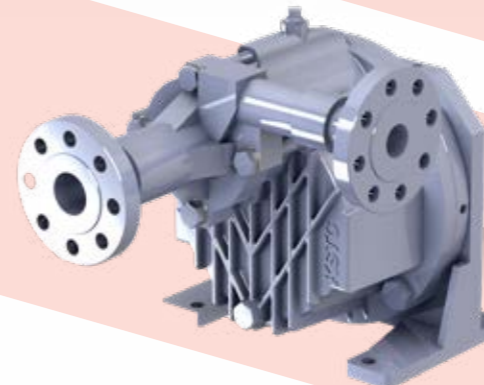
KSTP330

Type	High-Speed Integrally Geared Single-Stage Centrifugal Pump (General Service Non-API)
Head	500 - 3,500 ft (150 - 1,050 m)
Flow	50 - 430 gpm (10 - 100 m ³ /hr)
Max. Power Required	186 kW (250 hp)
Max. Suction Pressure	25 bar (350 psi)
Speed Range	6,550 to 17,550 rpm
Mounting Configuration	Vertical, Horizontal
Suction and Discharge Flanges	4"x3", 3"x2", 900# (ANSI RF)



KSTP360

Type	High-Speed Integrally Geared Single-Stage Centrifugal Pump (General Service Non-API)
Head	5 to 1,300 ft (2 - 400 m)
Flow	to 35 gpm (8 m ³ /hr)
Max. Power Required	7 kW (10 hp)
Max. Suction Pressure	14 bar (200 psi)
Speed Range	13,000 to 32,000 rpm
Mounting Configuration	Vertical, Horizontal
Suction and Discharge Flanges	1"x1", 300# (ANSI RF)



KSTP370

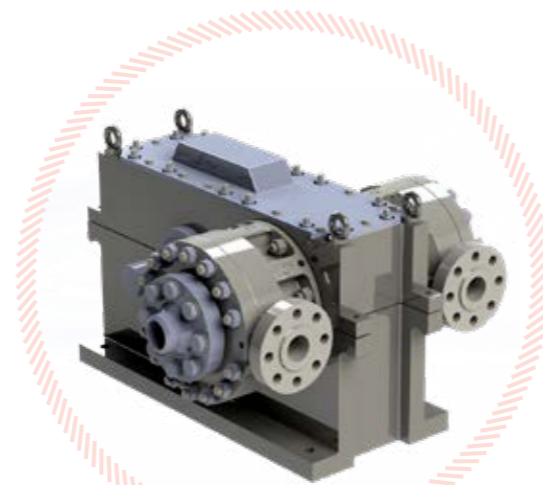
Type	High-Speed Integrally Geared Single-Stage Centrifugal Pump (General Service Non-API)
Head	360 to 2300 ft (110 to 700 m)
Flow	to 150 gpm (to 35 m ³ /hr)
Max. Power Required	55 kW (75 hp)
Max. Suction Pressure	18 bar (250 psi)
Speed Range	5,700 to 14,500 rpm
Mounting Configuration	Vertical, Horizontal
Suction and Discharge Flanges	2"x1.5", 300#, 600# (ANSI RF)



HORIZONTAL MULTI STAGES

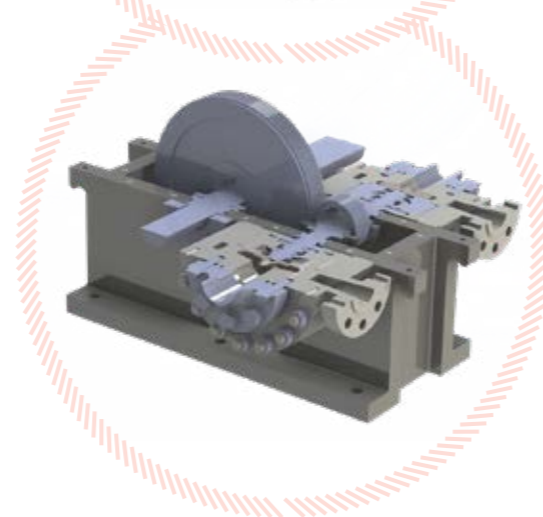
KSTP430

Type	High-Speed Integrally Gearing Multi-Stage Centrifugal Pump
Head	1,000 to 8,500 ft (300 to 2,600 m)
Flow	65 - 500 gpm (15-115 m3/hr)
Max. Power Required	600 kW (800 hp)
Max. Suction Pressure	30 bar (440 psi)
Speed Range	8,000 to 22,000 rpm
Mounting Configuration	Horizontal
Suction and Discharge Flanges	4"x3", 300#, 600#, 900# or 1,500# (ANSI RF or RTJ)



KSTP450

Type	High-Speed Integrally Gearing Multi-Stage Centrifugal Pump
Head	to 13,500 ft (4,100 m)
Flow	to 1,400 gpm (320 m3/hr)
Max. Power Required	1,865 kW (2500 hp)
Max. Suction Pressure	70 bar (1000 psi)
Speed Range	12,500 to 25,000 rpm
Mounting Configuration	Horizontal
Suction and Discharge Flanges	4"x4", 300#, 600#, 900#, 1,500# or 2,500# (ANSI RF or RTJ)



KSTP470

Type	High-Speed Integrally Gearing Multi-Stage Centrifugal Pump
Head	350 - 13,500 ft (100 to 4,100 m)
Flow	750-1400 gpm (170-320 m3/hr)
Max. Power Required	2,500 kW (3350 hp)
Max. Suction Pressure	70 bar (1,000 psi)
Speed Range	3,000 to 29,000 rpm
Mounting Configuration	Horizontal
Suction and Discharge Flanges	6"x6" or 8"x6", 600#, 900#, or 2,500# (ANSI RF or RTJ)

